

# UPDATE ON HIGHWAYS WORKS FOR NEW MSA AT J1, M6



**Thank you for your continuing patience while our new Motorway Service Area (MSA) is under construction at J1, M6 near Rugby. These bulletins will keep you updated on the associated highways works and improvements.**

As you are aware there has been a roadworks programme in place at **Junction 1 of the M6** in order to improve the overall vehicle capacity of the junction and at the same time facilitate the opening of a new Motorway Service Area.

The roadworks are due to be completed by **March 2021** and there will be some **overnight road closures** (8pm-6am) during **February** to facilitate the following works that need to be completed to allow the junction to fully open:

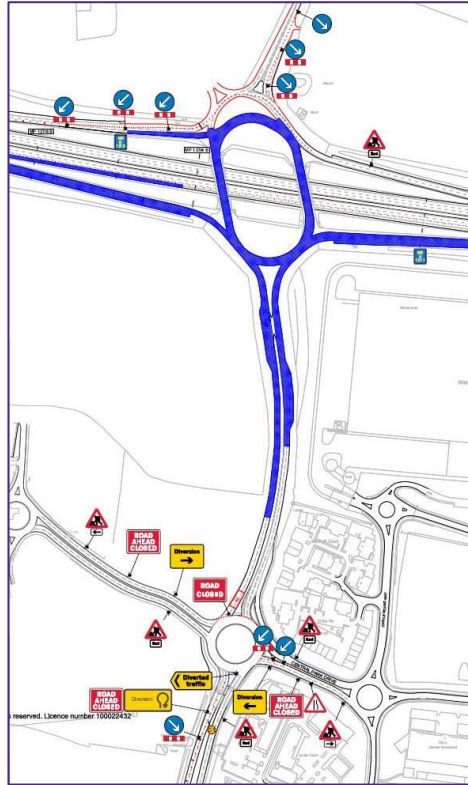
- **Surfacing**
- **Road markings**
- **Loop cutting**
- **Traffic light installation**
- **Street lighting installation**

After discussions with Highways England, it has been agreed that the closures are proposed to be:

- **4<sup>th</sup> – 5<sup>th</sup> February and 8<sup>th</sup>-12<sup>th</sup> February** where the following M6 Junction 1 slip road closures will apply:



- **15<sup>th</sup> – 19<sup>th</sup> February and 22<sup>nd</sup> – 23<sup>rd</sup> February** where the following M6 Junction 1 slip road closures will apply:



Diversions will be in place for the above dates.

**As a key local stakeholder we would appreciate your comments and feedback on both proposals outlined above and would welcome the opportunity to arrange a virtual meeting or call to discuss the proposals in more detail.**

You can find out more about the works on [www.rugbyservices.co.uk](http://www.rugbyservices.co.uk) or email [highways@rugbyservices.co.uk](mailto:highways@rugbyservices.co.uk) or call 0800 148 8911 (office hours).

Making it better

